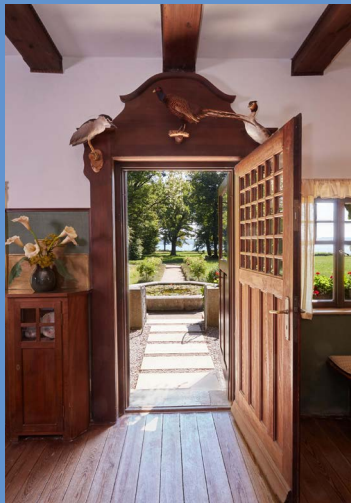
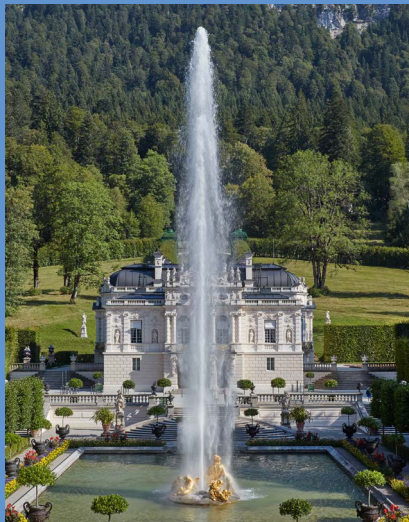


# Ammer-Amper Cycle Route

From Ettal to Oberschleissheim

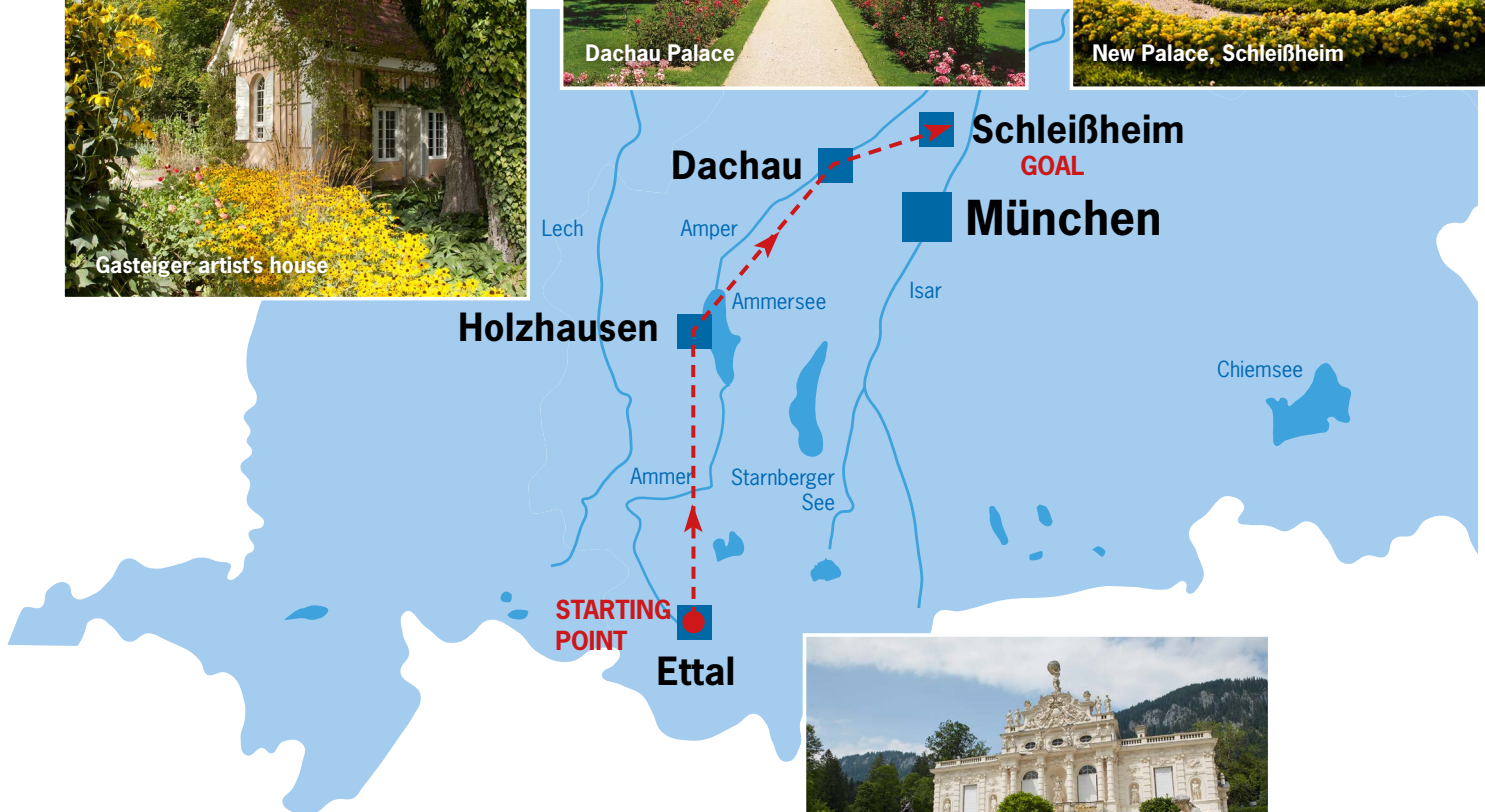


# Ammer-Amper Cycle Route

## Ammer-Amper Cycle Route

The sights under the responsibility of the Bavarian Palace Administration can be found at...

Ettal → Holzhausen by the Ammersee → Dachau → Oberschleißheim

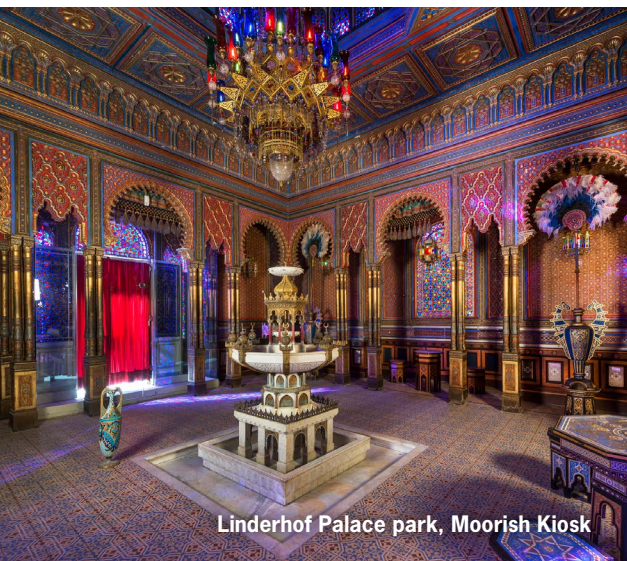




# Ammer-Amper Cycle Route



Linderhof Palace, Bedroom



Linderhof Palace park, Moorish Kiosk



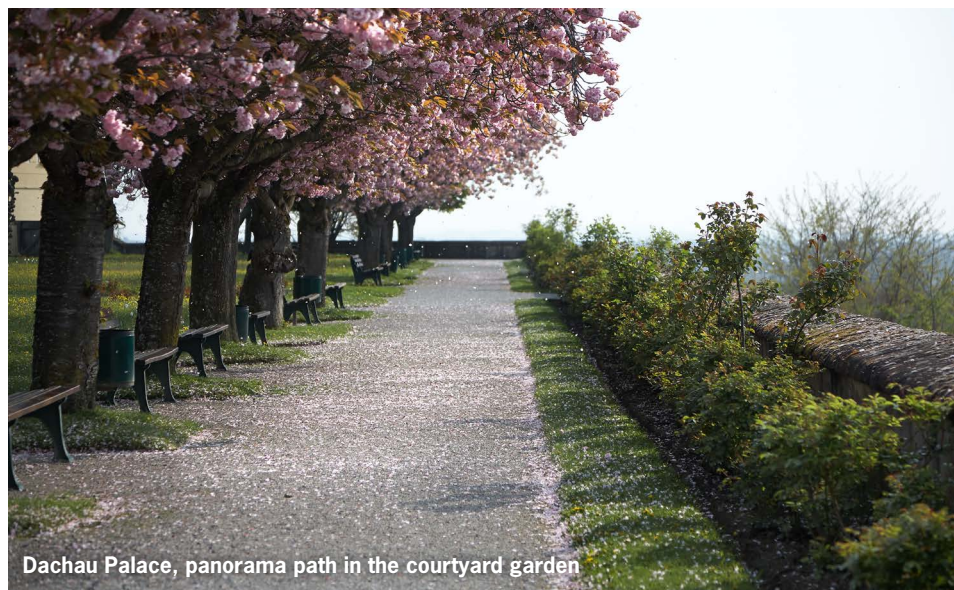
Gasteiger's House, Garden area



New Palace Schleißheim, east facade



New Palace Schleißheim, the elector's audience chamber



Dachau Palace, panorama path in the courtyard garden



# Ammer-Amper Cycle Route

## Brief description

The Ammer-Amper Cycle Route takes you through over 200 kilometres of picture-book Bavaria. The only cycle route in Upper Bavaria that currently has a 4-star classification begins at the source of the River Ammer near Ettal and continues to Moosburg where the River Amper flows into the Isar.

The cycle route can also be started from Linderhof Palace, a few kilometres south-west of Ettal. Parking places where cars can be left for several days (chargeable), a good connection with local transport (ÖPNV), free WCs and a bistro make the palace an ideal starting point.

After passing Oberammergau, the world-famous location of the Passion Play, the route follows the River Ammer, gradually leaving the Alps and crossing the picturesque hilly landscape of Pfaffenwinkel with its numerous cultural monuments. North of Weilheim, the cycle path passes Ammersee (Lake Ammer), switching to run alongside the River Amper. Numerous sights and beautiful river scenery line the route, the last section of which takes you past the towns of Fürstenfeldbruck, Dachau und Freising, before the Amper flows into the River Isar in Moosburg. The advantage of riding in this direction is that the route follows the downward flow of the rivers and makes cycling easier. It is however also very worthwhile to ride in the opposite direction, since you always have the alpine panorama in view, which comes closer all the time.

Distance:	<b>199 km</b>
Total ascent:	<b>869 m</b>
Total descent:	<b>1 286 m</b>
Highest point:	<b>881 m</b>
Lowest point:	<b>415 m</b>

## Link to the map

**Cycle map – Radlland Bayern:** This includes various options for displaying information about charging stations, repair shops and catering facilities etc. along the route.

## Links to further information

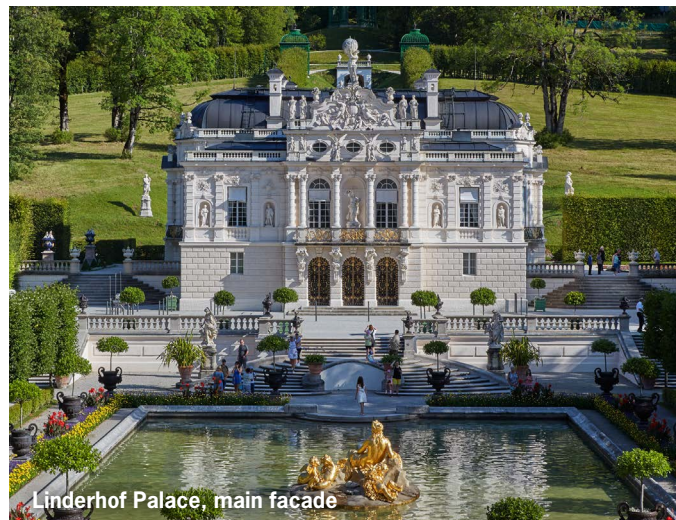
Information about further sights, possible accommodation, signposting etc.:

- [Ammer-Amper-Radweg – Radlland Bayern \(radlland-bayern.de\)](http://Ammer-Amper-Radweg – Radlland Bayern (radlland-bayern.de))
- [Ammer-Amper-Radweg](#)

## Bavarian Palace Administration sights

### ETTAL – LINDERHOF PALACE AND PARK

Linderhof is the only one of his three famous palaces that King Ludwig II of Bavaria was able to complete. The detailed façade and the magnificent rooms of this architectural masterpiece invite you to immerse yourself in the world of the fairy-tale king. The Venus Grotto is a particular highlight, a fascinating artificial dripstone cave, which was built into the hillside from 1875 and



enchants visitors with its magical atmosphere. The palace park also features exotic park buildings, harmoniously integrated into the breathtaking mountain backdrop.

Further information (e.g. guided tours, current opening times and admission fees) can be found on [the website](#).

## Information and facilities for cyclists

- Cycling is prohibited for the safety of the other visitors on the path between the cash desk and the palace and on Schlossplatz.
- Places where you must get off your bike, e.g. the path from the cash desk to Schlossplatz, are marked.
- Bike racks are available (right at the bus stop at the Linderhof car park).
- Lockers big enough for cases are available by the cash desk and there are also lockers of handbag size at the palace WC.
- The nearest available public charging stations for e-bikes are at [the Ettaler Mühle restaurant](#) and [Ammergauer Haus in Oberammergau](#).



Venus Grotto in the Linderhof Palace



# Ammer-Amper Cycle Route

## HOLZHAUSEN ON AMMERSEE – GASTEIGER ARTIST'S HOUSE



The Gasteiger artist's house, front garden

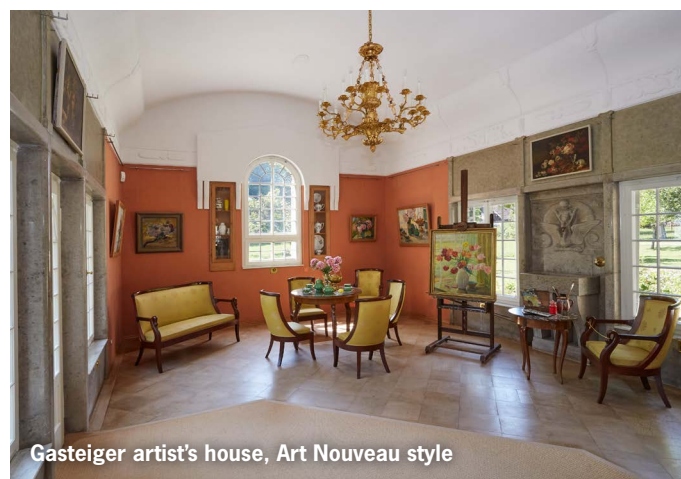
The Gasteiger artist's house is a fascinating example of Munich Art Nouveau. This unique ensemble of residential house, landscape park and outhouses served the famous sculptor Mathias Gasteiger and his wife Frau Anna Sophie Gasteiger as a place of retreat.

In the museum inside the house are rooms decorated in the Art Nouveau style, historical photos, a selection of sculptures by Mathias Gasteiger and a collection of paintings by Anna Sophie Gasteiger.

Further information (e.g. guided tours, current opening times and admission fees) can be found on [the website](#).

### Information and facilities for cyclists

- Cycling is prohibited in the artists' park for the safety of the other visitors.
- Bike racks are available at the entrance to the park.
- The nearest available e-bike charging station is at the [Utting camp site kiosk](#) (charging cable available against a deposit).



Gasteiger artist's house, Art Nouveau style

## DACHAU – DACHAU PALACE AND COURT GARDEN

The palace originated as a high medieval castle belonging to the Counts of Dachau. From 1546 to 1577 it was enlarged to form a massive four-winged complex. The Festival Hall has one of the most important Renaissance wooden ceilings in South Germany.



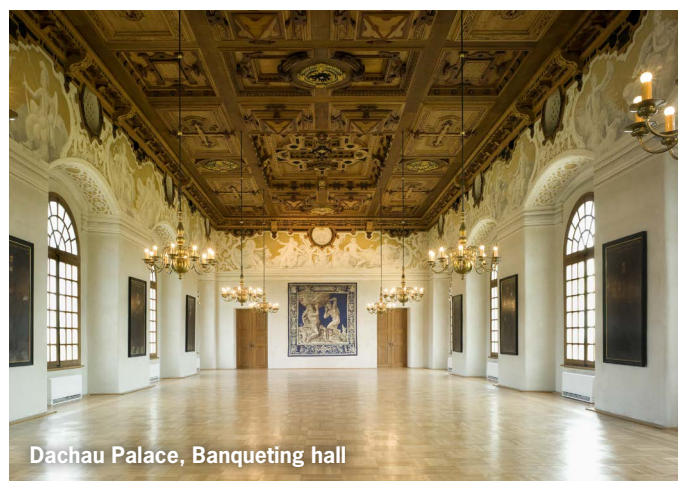
Dachau Palace and Court Garden

From the Court Garden, picturesquely located on a ridge, there is a magnificent panoramic view of the Alps.

Further information (e.g. guided tours, current opening times and admission fees) can be found on [the website](#).

### Information and facilities for cyclists

- Cycling is prohibited on the footpaths/gravel paths for the safety of the other visitors.
- There are racks for five bikes at the court garden entrance and for five bikes at the wooden kiosk at Schlossplatz.
- Charging stations can be found for example by the [Volksbank Raiffeisenbank Dachau in Augsburg](#) [er Straße](#) and [Münchner Straße](#).



Dachau Palace, Banqueting hall



# Ammer-Amper Cycle Route



Schleissheim Palace Complex, Aerial view

## Additional destination

From Dachau Palace it is only around ten kilometres to the palace complex of Schleissheim, which is well worth seeing. You can get there using the 'Wasser-Radlwege Hopfenschleife Querverbindung' (Water Cycle Route Hopfenschleife cross-connection').

## OBERSCHLEISSHEIM – SCHLEISSHEIM PALACE COMPLEX

The palace complex of Schleissheim is one of the most important Baroque complexes in Germany. It was built for the Bavarian dukes and electors as a summer residence and consists of the Old Palace, New Palace and former hunting lodge Lustheim.

Splendid architecture, valuable paintings and other treasures are on display inside the palace and the court garden is a treat for garden and nature lovers.

With its artistically designed water features, including impressive fountains and a magnificent cascade, it is one of the best preserved Baroque gardens in Europe.

Further information (e.g. guided tours, current opening times and admission fees) can be found on [the website](#).

## Information and facilities for cyclists

- Cycling is prohibited on the paths in the park (within the park gates) for the safety of the other visitors. However, bicycles can be pushed through the park.
- At Lustheim Palace bike racks are available at each of the two car park gates.
- There are also bike racks at the New and Old Palace.
- There are also bike racks near the castle restaurant/beer garden. Charging stations are available there.
- There are two bike shops in Oberschleissheim that offer a repair service.



New Palace, West facade



Old Palace, East facade



Staircase hall in the New Palace



Lustheim Palace at the Court Garden

Want to know more? Information about all 45 palaces, castles and residences as well as other monuments or artist's houses under the responsibility of the Bayerische Schlösserverwaltung can be found on our homepage.

A warm welcome  
awaits you  
and your guests!

Tourismusmarketing  
Claudia Albrecht  
Florian Leischer  
[tourismus@bsv.bayern.de](mailto:tourismus@bsv.bayern.de)  
+49 89 17908-0

Bayerische Schlösserverwaltung  
Schloss Nymphenburg  
Eingang 16  
80638 München  
[www.schloesser.bayern.de](http://www.schloesser.bayern.de)



Bayerische  
Schlösserverwaltung